

RAND AIRPORT (FAGM)

FAGM | Public — GA airport

Coordinates	S26°14'31" E28°09'05"
Elevation	5,483 ft AMSL
Frequency	118.7 MHz
Access	Public — GA airport
Fuel	AVGAS 100LL, JET A-1 (?)
Night Ops	Yes
Tower Phone	+27 11 827 8884

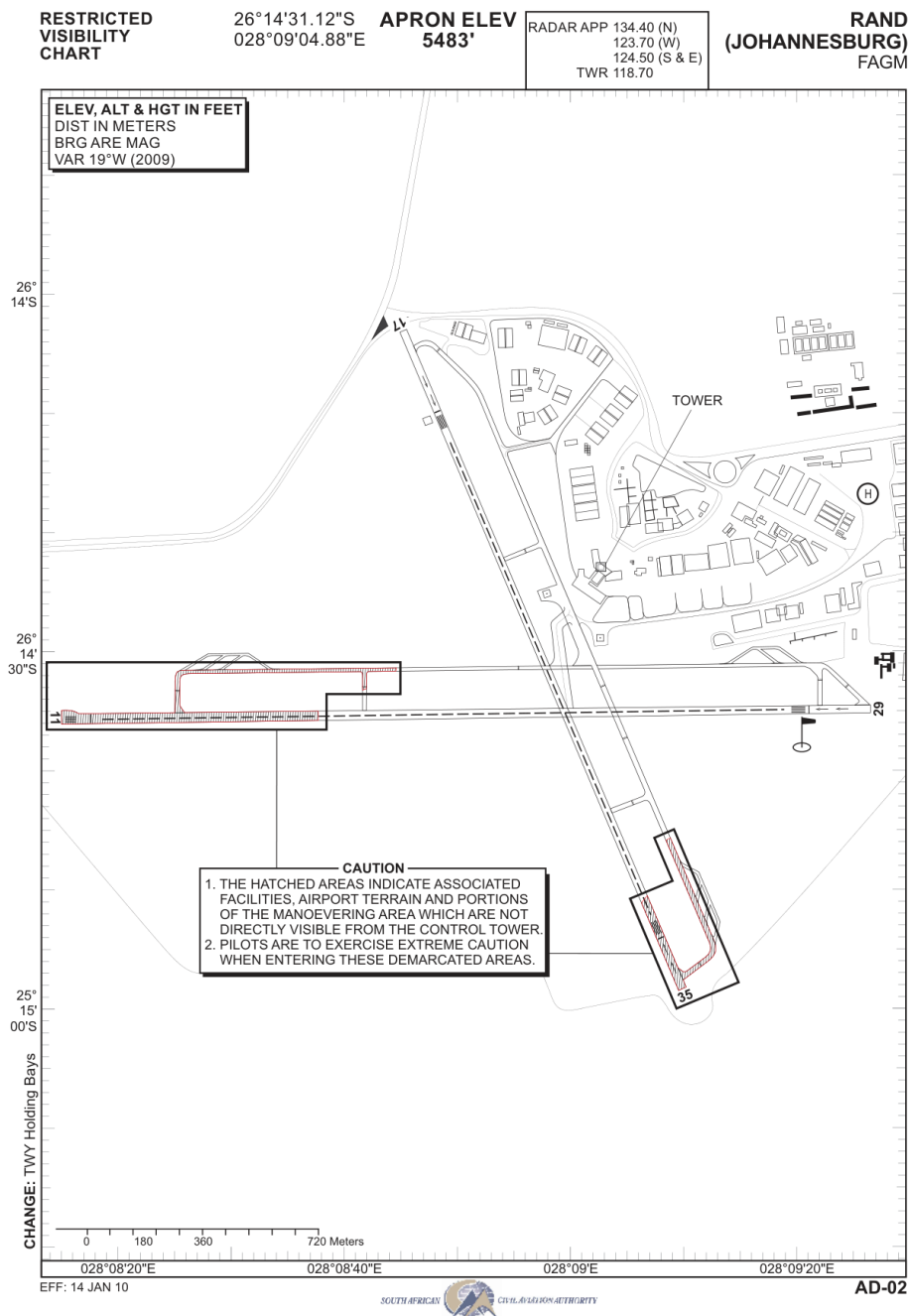
Runways

RWY	Length	Width	Surface	Strength
11/29	1,524 m (?)	30 m (?)	Asphalt	[L] Left (?)
17/35	1,220 m (?)	23 m (?)	Asphalt	[L] Left (?)

[!] [!] Controlled airspace — within Johannesburg TMA

- Historic GA airport — home to South African Airways Museum
- Very high elevation (5,483 ft) — significant density altitude
- ATNS provides ATC services
- Multiple GA operators and maintenance facilities

Aerodrome Diagram



Verify currency against official AIP

Data source: SACAA AIP (collected 2026-03-19)

SUPPLEMENTARY REFERENCE ONLY — Does NOT replace SACAA AIP, NOTAMs, or official aerodrome charts. Verify all data before flight. Use entirely at your own risk. | wagyu.wings