

# OR TAMBO INTERNATIONAL AIRPORT (FAOR)

FAOR | Public — Major international hub

Coordinates	S26°08'05" E28°14'41"
Elevation	5,558 ft AMSL
Frequency	<b>118.1 MHz</b>
Access	Public — Major international hub
Fuel	JET A-1, AVGAS 100LL
Night Ops	Yes
Tower Phone	+27 11 921 6262

## Frequencies

JNB Tower	<b>118.1 MHz</b>
JNB Tower East	<b>118.6 MHz</b>
JNB Radar West	<b>123.7 MHz</b>
JNB Radar South/East	<b>124.5 MHz</b>
JNB Ground (North)	<b>121.9 MHz</b>
JNB Ground (South)	<b>121.65 MHz</b>
JNB ATIS	<b>126.2 MHz</b>
JNB Clearance	<b>121.7 MHz</b>

## Runways

RWY	Length	Width	Surface	Strength
03L/21R	4,418 m	61 m	Asphalt	PCN 80
03R/21L	3,400 m	60 m	Asphalt	PCN 80
Service	Frequency			
JNB Tower	118.1 MHz			
JNB Tower East	118.6 MHz			
JNB Radar West	123.7 MHz			
JNB Radar South/East	124.5 MHz			
JNB Ground (North)	121.9 MHz			
JNB Ground (South)	121.65 MHz			
JNB ATIS	126.2 MHz			
JNB Clearance	121.7 MHz			

## **[!] [!] Busiest airport in Africa — Class A airspace above FL245**

- Class B TMA from 6500 ft to FL245; Class C CTR surface to 8000 ft
- VFR operations are very restricted — special VFR only when weather permits
- High elevation (5,558 ft) — significant density altitude, especially in summer
- Thunderstorms common in summer (Oct-Mar) — afternoon convective activity
- Three TMA sectors: North, Central, South

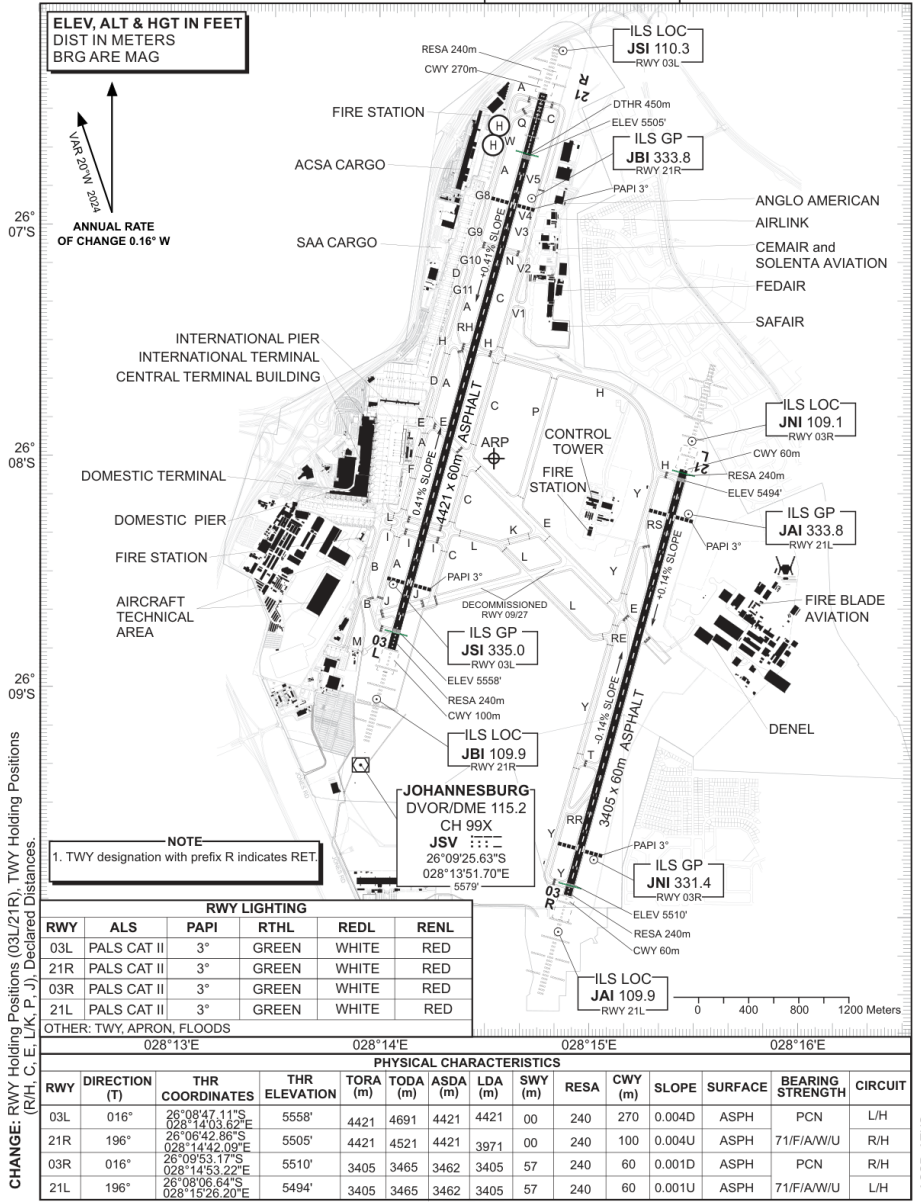
## Aerodrome Diagram

**AERODROME/  
HELIPORT  
CHART - ICAO**

26°08'01.30"S **ELEV 5558'**  
028°14'32.34"E **GUND 88.9'**

FAOR ATIS: 126.20 APP S: 124.50  
115.20 E: 124.50  
APN: 122.65 W: 123.70  
TWR E: 118.60 SMC: 121.90  
W: 118.10

**JOHANNESBURG**  
(O.R. TAMBO INTERNATIONAL)  
FAOR



CHANGE: RWY Holding Positions (03L/21R), TWY Holding Positions (R/H, C, E, L, K, P, J), Declared Distances.  
 26° 07'S  
 26° 08'S  
 26° 09'S  
 028° 13'E  
 028° 14'E  
 028° 15'E  
 028° 16'E

**ELEV, ALT & HGT IN FEET  
DIST IN METERS  
BRG ARE MAG**

VAR 200° 300'  
ANNUAL RATE  
OF CHANGE 0.16° W

**NOTE**  
1. TWY designation with prefix R indicates RET.

RWY LIGHTING				
RWY	ALS	PAPI	RTHL	RENL
03L	PALS CAT II	3°	GREEN	WHITE
21R	PALS CAT II	3°	GREEN	WHITE
03R	PALS CAT II	3°	GREEN	WHITE
21L	PALS CAT II	3°	GREEN	WHITE

OTHER: TWY, APRON, FLOODS

PHYSICAL CHARACTERISTICS														
RWY	DIRECTION (T)	THR COORDINATES	THR ELEVATION	TORA (m)	TODA (m)	ASDA (m)	LDA (m)	SWY (m)	RESA	CWY (m)	SLOPE	SURFACE	BEARING STRENGTH	CIRCUIT
03L	016°	26°08'47.11"S 028°14'03.62"E	5558'	4421	4691	4421	4421	00	240	270	0.004D	ASPH	PCN	L/H
21R	196°	26°06'42.86"S 028°14'42.09"E	5505'	4421	4521	4421	3971	00	240	100	0.004U	ASPH	71/F/AN/U	R/H
03R	016°	26°09'53.17"S 028°14'53.22"E	5510'	3405	3465	3462	3405	57	240	60	0.001D	ASPH	PCN	R/H
21L	196°	26°08'06.64"S 028°15'26.20"E	5494'	3405	3465	3462	3405	57	240	60	0.001U	ASPH	71/F/AN/U	L/H

EFF: 03 OCT 24



Verify currency against official AIP

**AD-01**

ACSP: ATNS

Data source: SACAA AIP (collected 2026-03-19)

SUPPLEMENTARY REFERENCE ONLY — Does NOT replace SACAA AIP, NOTams, or official aerodrome charts. Verify all data before flight. Use entirely at your own risk. | waygu.wings